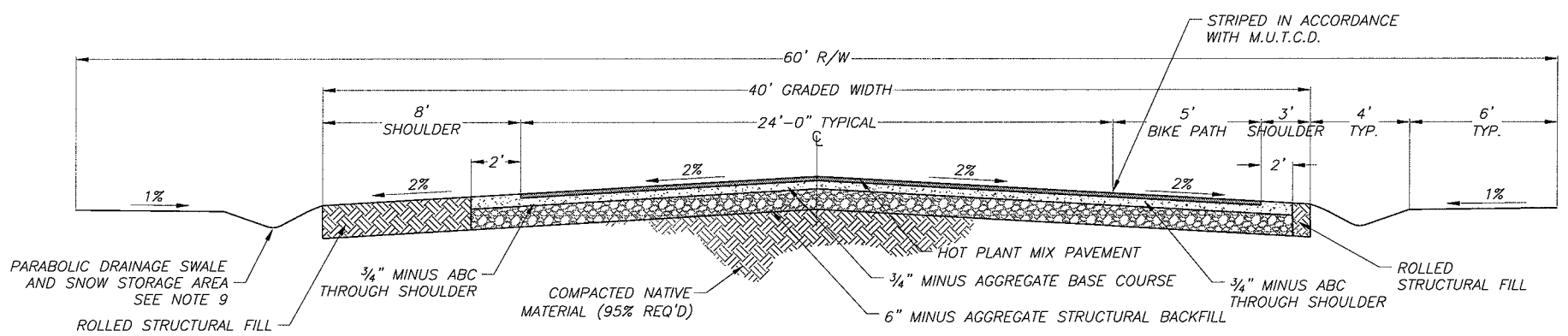
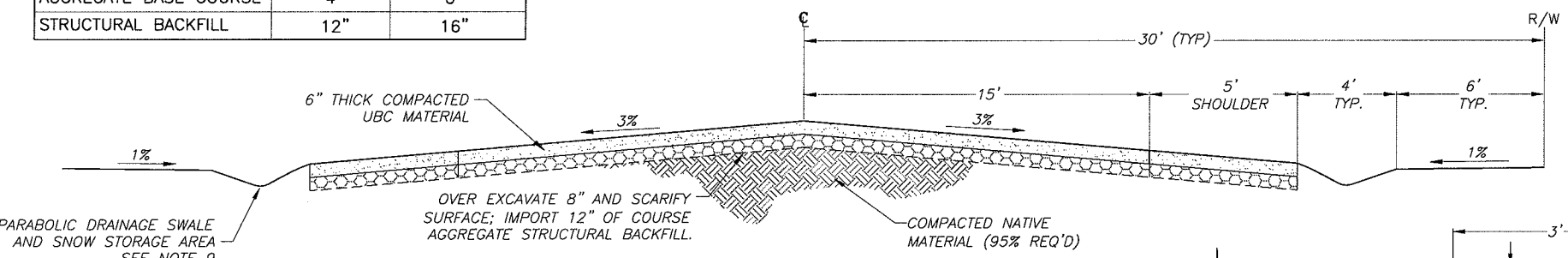


W:\00899 Victor General City Eng\Load\Drawings\Drawings\DWG 1 - Roadway Const. 2006.dwg, Dec 20, 2006 10:52am m.jrd/rne

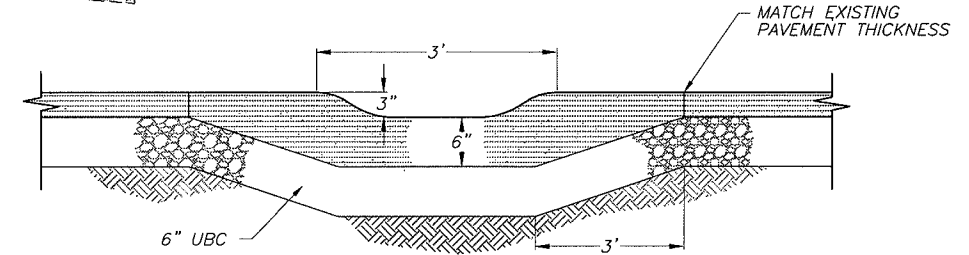


TYPICAL RURAL ROADWAY - SECTION 1
NOT TO SCALE

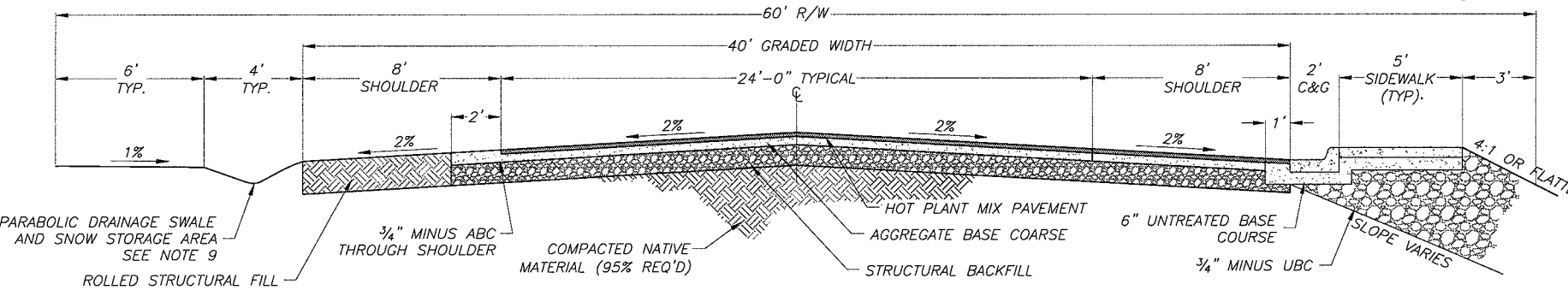
TABLE OF ROAD MATERIAL THICKNESSES		
	LOCAL	COLLECTOR
ASPHALT PAVEMENT	2-1/2"	4" (MIN. 2 LIFTS)
AGGREGATE BASE COURSE	4"	6"
STRUCTURAL BACKFILL	12"	16"



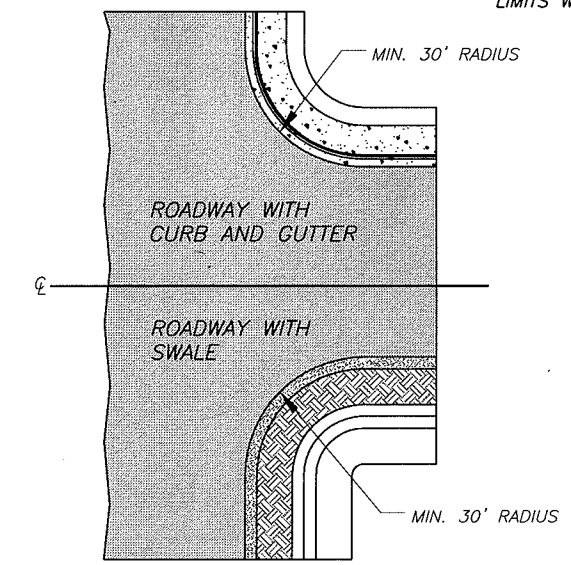
TYPICAL GRAVEL ROADWAY - SECTION 2
NOT TO SCALE



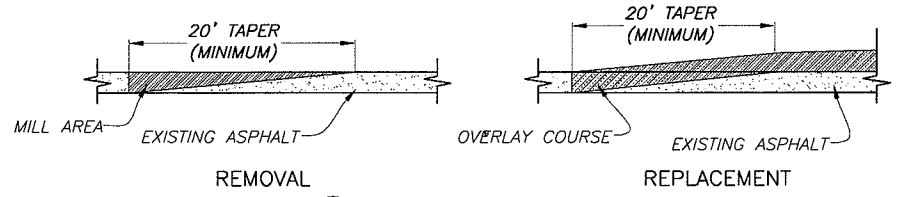
TYPICAL SPEED DIP
NOT TO SCALE



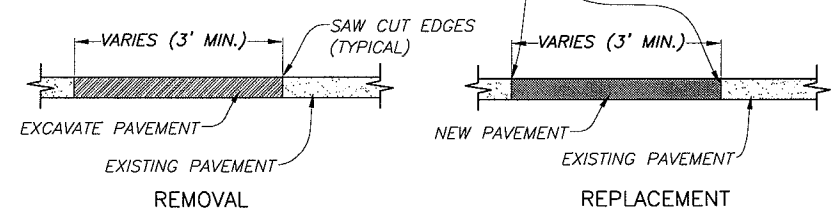
TYPICAL ROADWAY WITH CURB & GUTTER - SECTION 3
NOT TO SCALE



TYPICAL ROADWAY - PLAN
NOT TO SCALE



MILLING END TREATMENT
NOT TO SCALE



EXCAVATION END TREATMENT
NOT TO SCALE

STREET DESIGN NOTES:

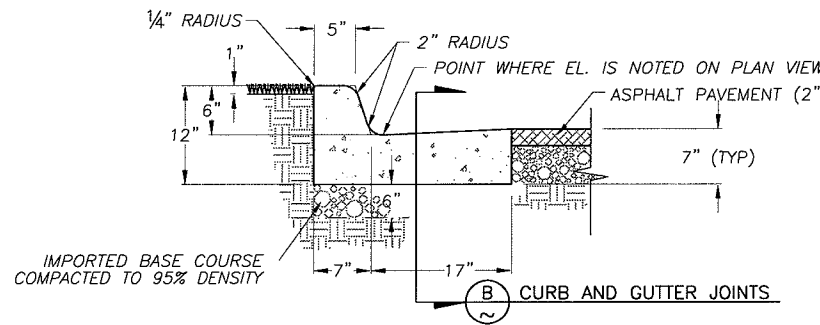
- 60' ROW FOR ALL ROADWAYS AND STREETS. GRADED WIDTH OF ALL STREETS SHALL BE 40 FEET. MAXIMUM LONGITUDINAL GRADE OF ALL STREETS IS EIGHT PERCENT (8%).
- PARABOLIC DRAINAGE AND SNOW STORAGE SHALL BE PROVIDED ALONG ALL STREETS. DRAINAGE WAYS SHALL BE RESEDED AFTER CONSTRUCTION.
- SPEED DIPS SHALL BE REQUIRED WHEN AND LOCATED WHERE DIRECTED BY THE CITY.

CONSTRUCTION NOTES:

- 4 INCHES OF 3/4" MINUS ABC SHALL BE REQUIRED UNDER ALL CONCRETE, AND WHERE FILL MATERIAL IS REQUIRED, OR WHERE DIRECTED BY CITY ENGINEER.
- ALL CONCRETE SHALL BE CURED WITH A CURING COMPOUND AS SPECIFIED IN THE STANDARD SPECIFICATIONS OR AS DIRECTED BY THE CITY ENGINEER.
- STANDARD SIDEWALK WIDTH IS 5 FEET IN NEW CONSTRUCTION. STANDARD CROSS SLOPE IS 2%.
- PLACE PREFORMED EXPANSION JOINT FILLER AT DRIVEWAY CONSTRUCTION AND AT MAXIMUM SPACING OF 60 FEET FOR NEW SIDEWALK CONSTRUCTION.
- FULL HEIGHT CURB MAY BE SAW CUT TO PROVIDE RESIDENTIAL DRIVEWAY APPROACH.
- WHEREVER PRACTICAL PROVIDE ADEQUATE DISTANCE FROM BACK OF DRIVEWAY CURB TO SIDEWALK SO THAT A MINIMUM 4' WIDE PATHWAY WITH A CROSS SLOPE OF 2% IS AVAILABLE FOR HANDICAP ACCESSIBILITY.
- ALL UTILITY CROSSINGS (INCLUDING WATER, SEWER, ELECTRIC, TELEPHONE, ETC.) UNDER ASPHALT ROADWAY SURFACES SHALL BE BORED BY AN APPROVED METHOD CONSISTENT WITH THE AREA AND SOIL CONDITIONS UNLESS OTHERWISE APPROVED IN WRITING BY SPECIAL PERMIT BY THE CITY OR ITS ENGINEER.
- CHIPSEAL IS REQUIRED ON ALL NEWLY ASPHALT PAVED ROADS AND STREETS WITHIN ONE (1) YEAR AFTER THEIR CONSTRUCTION. SEAL COATS SHALL BE APPLIED BETWEEN MAY 15 AND AUGUST 31 AND ONLY WHEN AIR AND ROADBED TEMPERATURES IN THE SHADE ARE GREATER THAN 65 DEGREES FAHRENHEIT. APPLICATION OF SEAL COATS SHALL NOT BE MADE DURING RAIN, FOG, DUST, OR OTHER UNSUITABLE WEATHER.
- MILLING END TAPER DISTANCES SHALL BE LENGTHENED BY THE CITY IN ACCORDANCE WITH INCREASED SPEED LIMITS WHERE APPLICABLE.

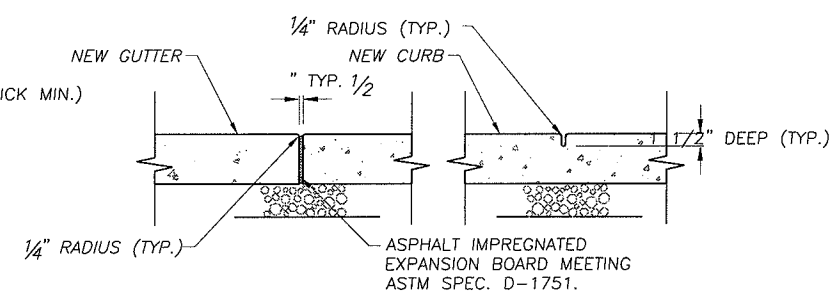
47 EAST 4TH AVE. AFTON, WYOMING 83110 TEL 307.885.8500 · FAX 307.885.8501 www.sunrise-eng.com		CITY OF VICTOR STANDARD DRAWINGS ROADWAY CONSTRUCTION		
DATE	DESIGNED	DRAWN	CHECKED	SHEET NO.
12/20/06	EED	EED	EJS	1 of 8
				1

W:\00899 Victor General City Eng\Cad\PM & Tech Specs\2006 PW Drawings\DWG 2 - C&G Sidewalk 2006.dwg Dec 20, 2006 10:52am mjrgrdine

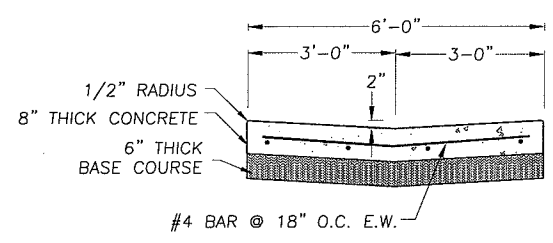


(TYP) CURB AND GUTTER SECTION
NOT TO SCALE

- NOTES:
1. INSTALL EXPANSION/CONTRACTION JOINTS ON 60 FT. INTERVALS.
2. INSTALL CONTROL JOINTS ON 10 FT. INTERVALS.

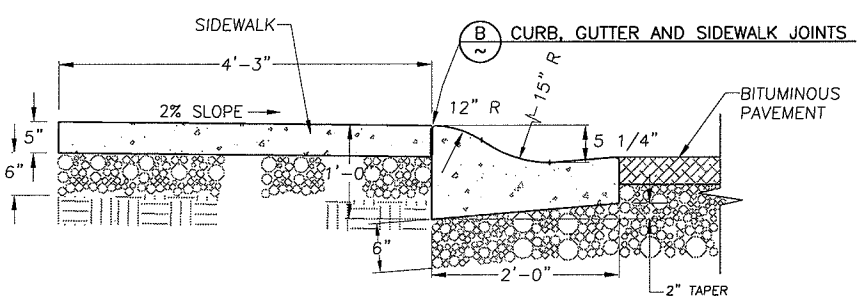


(B) CURB AND GUTTER JOINTS
NOT TO SCALE

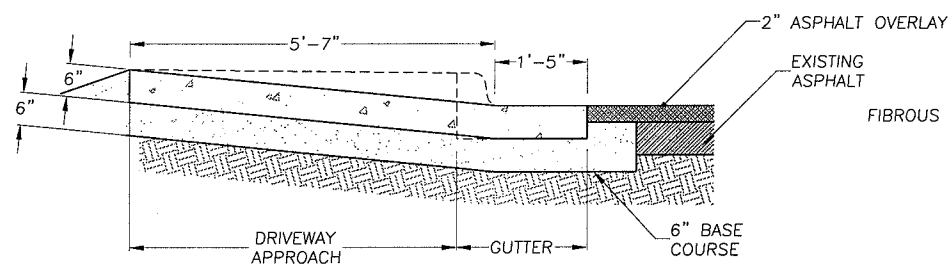


(TYP) VALLEY GUTTER
NOT TO SCALE

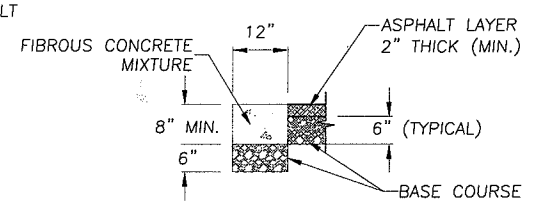
- CONSTRUCTION NOTES:**
- 4 INCHES OF 3/4" MINUS ABC BASE SHALL BE REQUIRED UNDER ALL CONCRETE, AND WHERE FILL MATERIAL IS REQUIRED, OR WHERE DIRECTED BY THE CITY ENGINEER.
 - ALL CONCRETE SHALL BE CURED WITH A CURING COMPOUND AS SPECIFIED IN THE STANDARD SPECIFICATIONS OR AS DIRECTED BY THE CITY ENGINEER.
 - STANDARD SIDEWALK WIDTH IS 5 FEET IN NEW CONSTRUCTION. STANDARD CROSS SLOPE IS 2%.
 - PLACE PREFORMED EXPANSION JOINT FILLER AT DRIVEWAY CONSTRUCTION AND AT MAXIMUM SPACING OF 60 FEET FOR NEW SIDEWALK CONSTRUCTION.
 - FULL HEIGHT CURB MAY BE SAW CUT TO PROVIDE RESIDENTIAL DRIVEWAY APPROACH.
 - WHEREVER PRACTICAL PROVIDE ADEQUATE DISTANCE FROM BACK OF DRIVEWAY CURB TO SIDEWALK SO THAT A MINIMUM 4' WIDE PATHWAY WITH A CROSS SLOPE OF 2% IS AVAILABLE FOR HANDICAP ACCESSIBILITY.



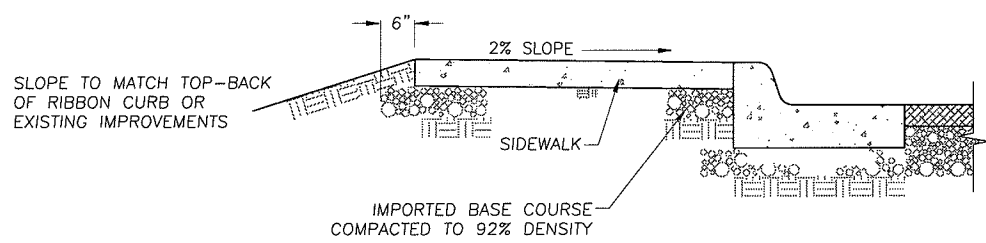
(TYP) ROLL-BACK CURB, GUTTER AND SIDEWALK SECTION
NOT TO SCALE



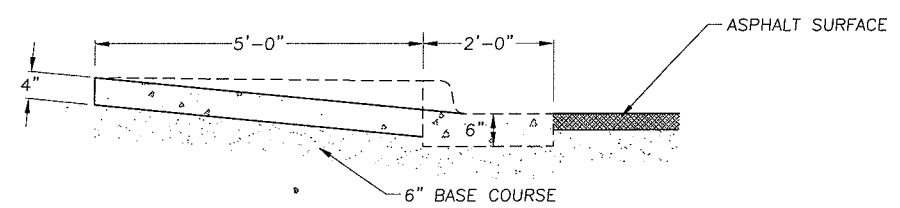
(TYP) DRIVEWAY - SECTION
NOT TO SCALE



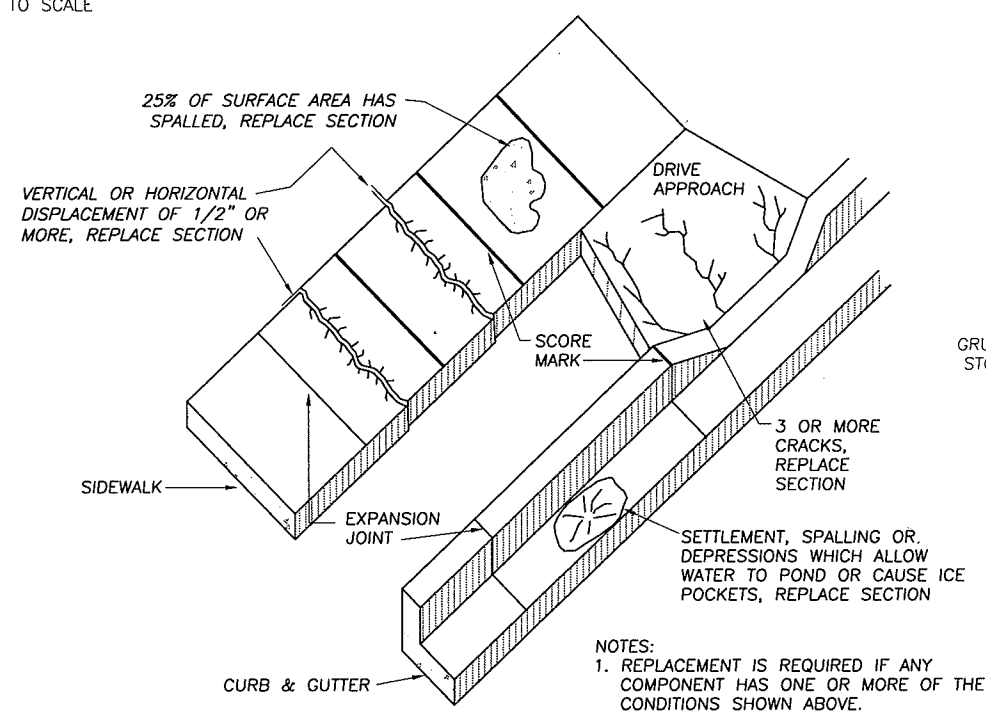
(TYP) RIBBON CURB - SECTION
NOT TO SCALE



(TYP) HIGH-BACK CURB, GUTTER AND SIDEWALK SECTION
NOT TO SCALE

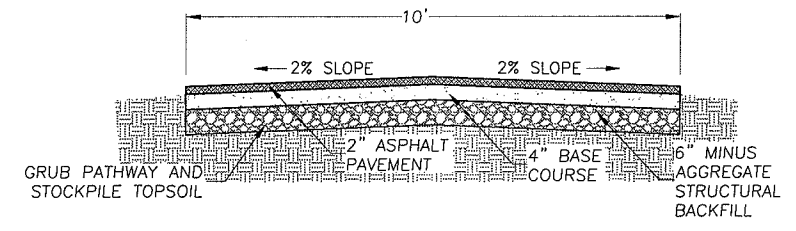


(TYP) WHEELCHAIR RAMP - SECTION
NOT TO SCALE



(TYP) DEFECTIVE CONCRETE REPLACEMENT CRITERIA
NOT TO SCALE

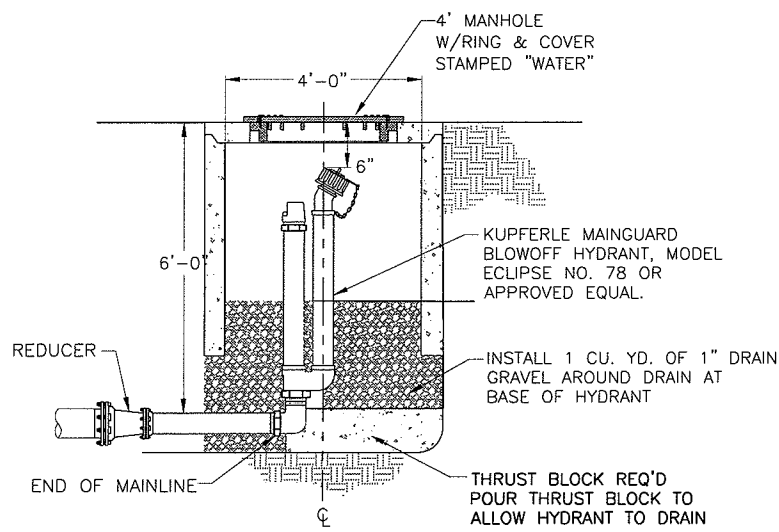
- NOTES:
1. REPLACEMENT IS REQUIRED IF ANY COMPONENT HAS ONE OR MORE OF THE CONDITIONS SHOWN ABOVE.
2. ANYTIME CONCRETE IS CUT TO REPLACE A DEFECTIVE COMPONENT, THE CUT SHOULD EXTEND COMPLETELY THROUGH THE PIECE BEING REPLACED



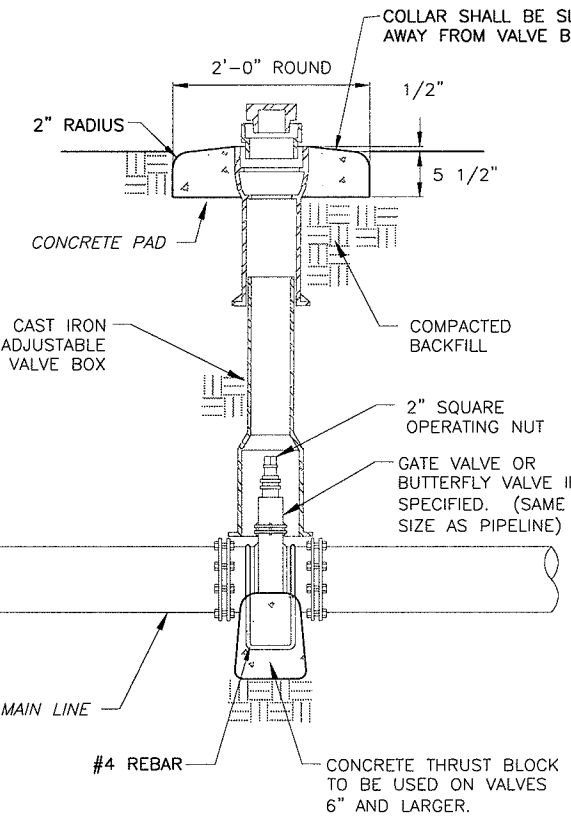
(TYP) PATHWAY - SECTION
NOT TO SCALE

47 EAST 4TH AVE. AFTON, WYOMING 83110 TEL 307.885.8500 • FAX 307.885.8501 www.sunrise-eng.com		CITY OF VICTOR STANDARD DRAWINGS SIDEWALK CONSTRUCTION			
DATE	DESIGNED	DRAWN	CHECKED	SHEET NO.	2
12/20/06	EED	EED	EJS	2 of 8	

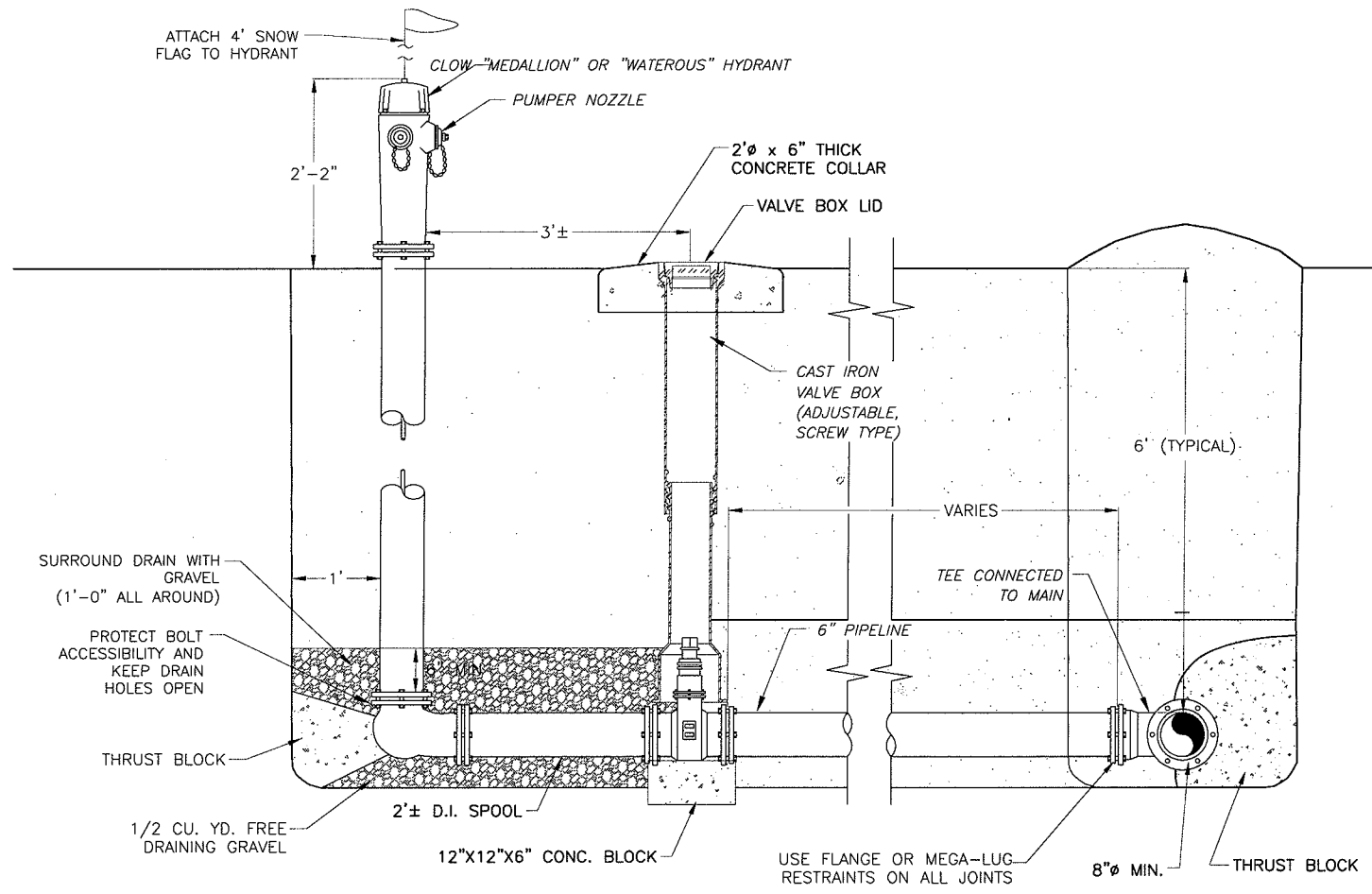
W:\00899 Victor General City Eng\Con\Drawings\DWG 3 - Water Services\2006.dwg Dec 20, 2006 10:52am mjr:rdine



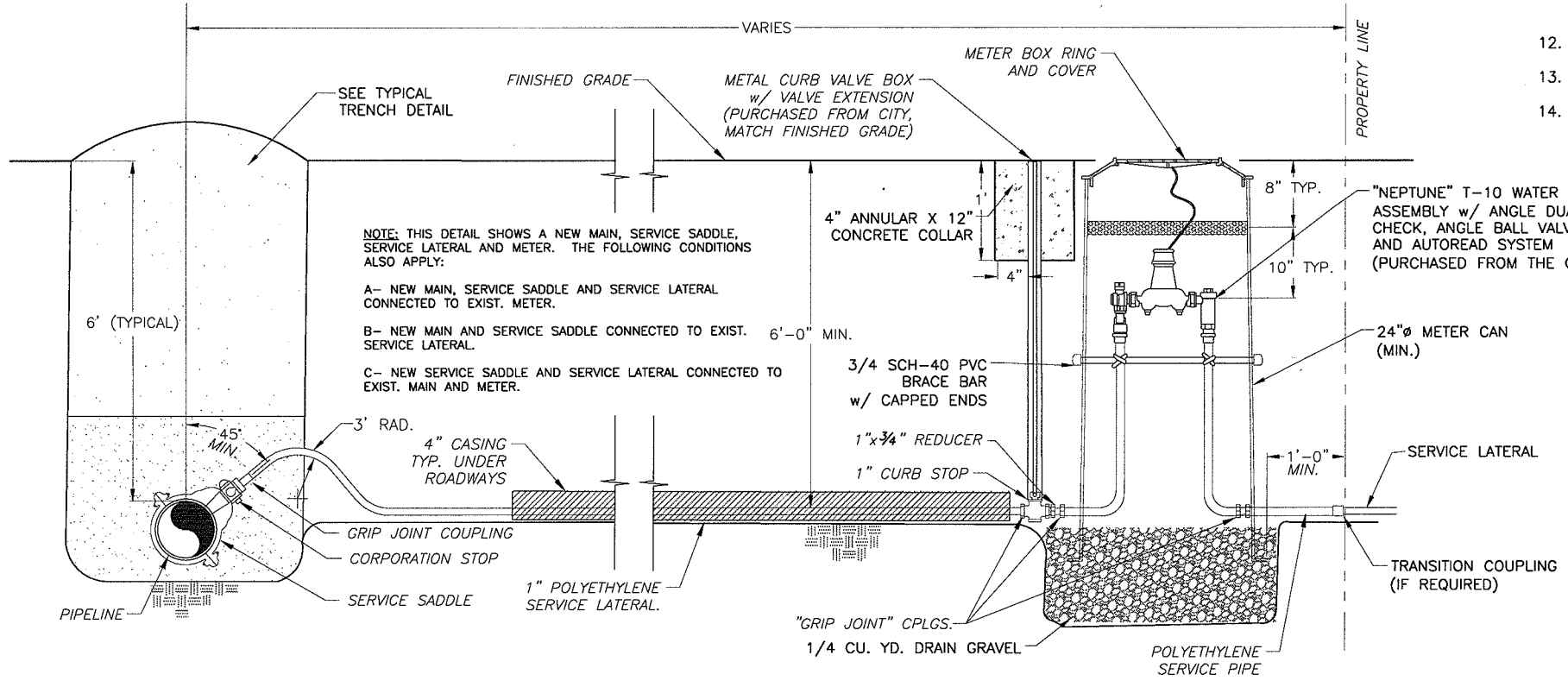
(TYP) BLOWOFF/FLUSH HYDRANT - SECTION
NOT TO SCALE



(TYP) GATE VALVE ASSEMBLY
NOT TO SCALE



(TYP) FIRE HYDRANT ASSEMBLY
NOT TO SCALE



(TYP) WATER SERVICE CONNECTION
NOT TO SCALE

CONSTRUCTION NOTES:

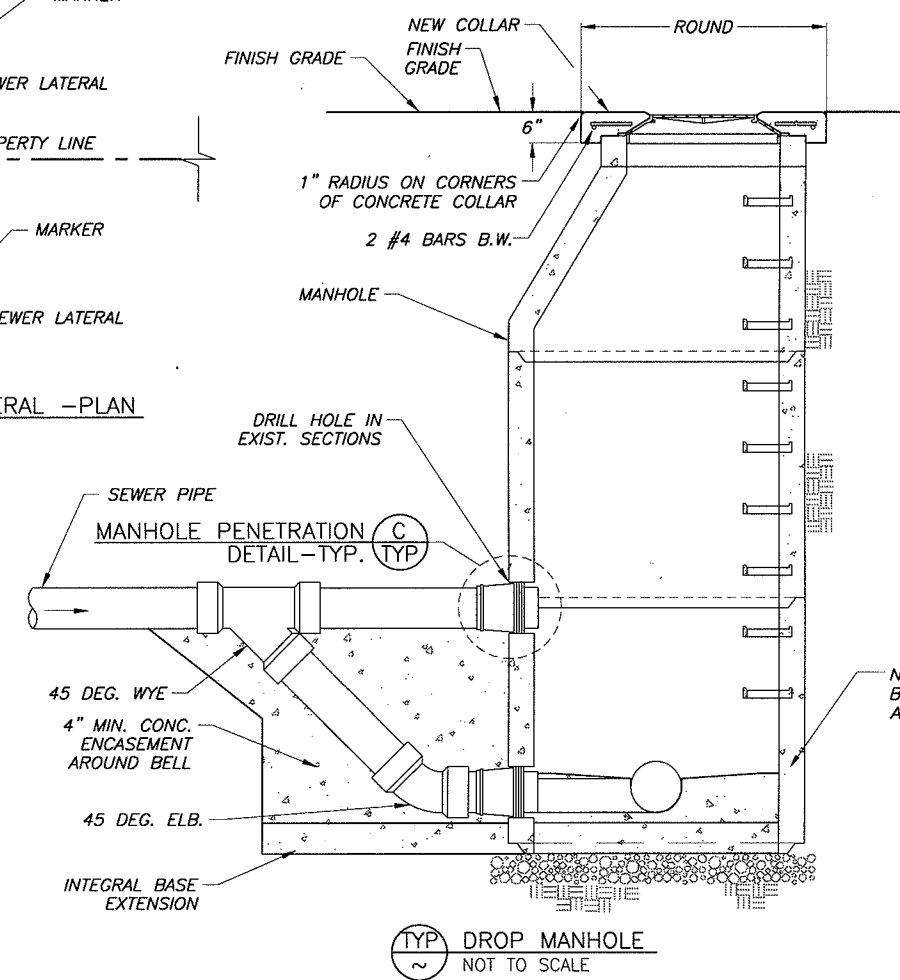
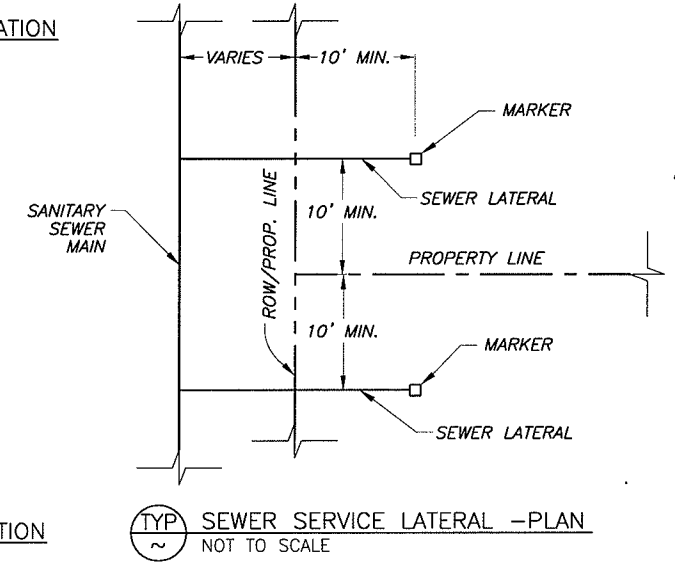
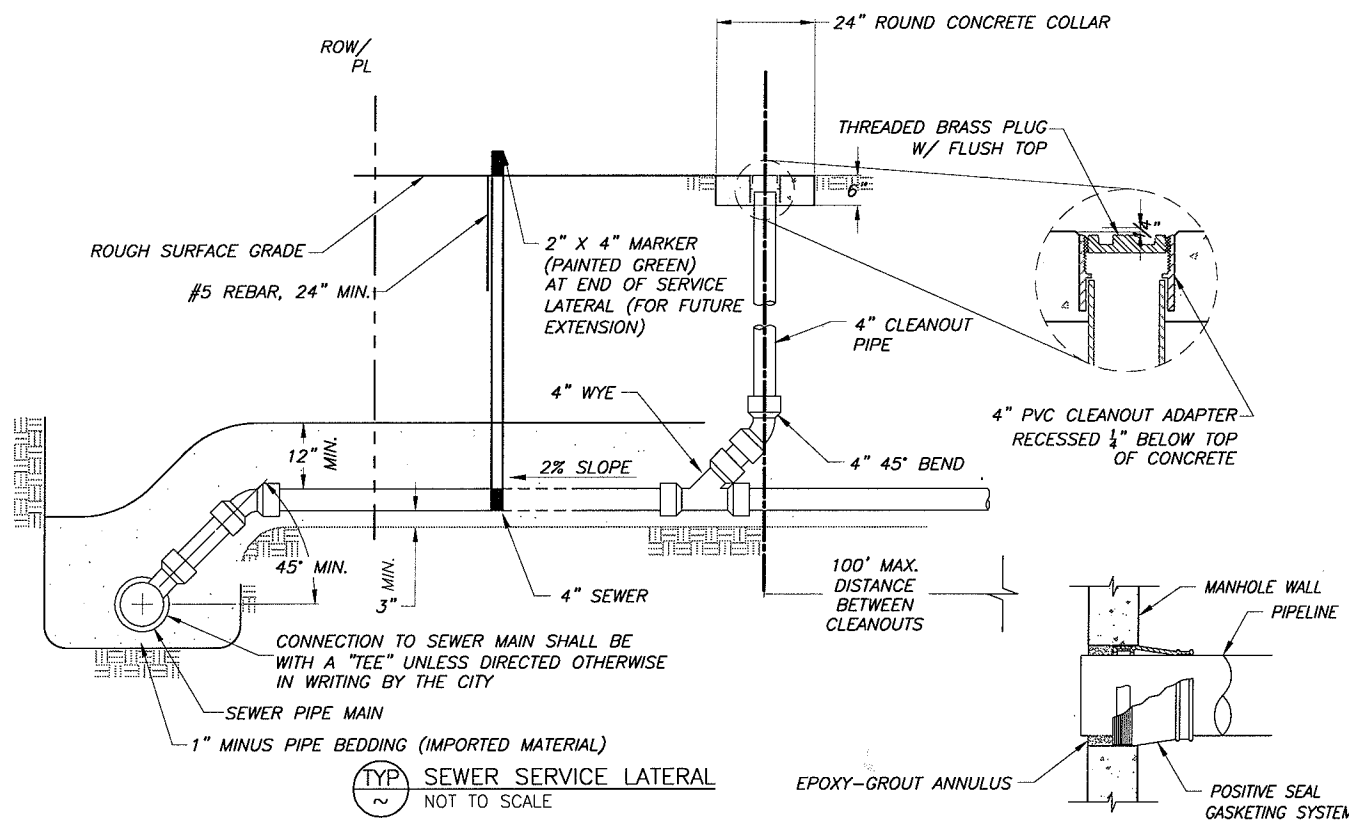
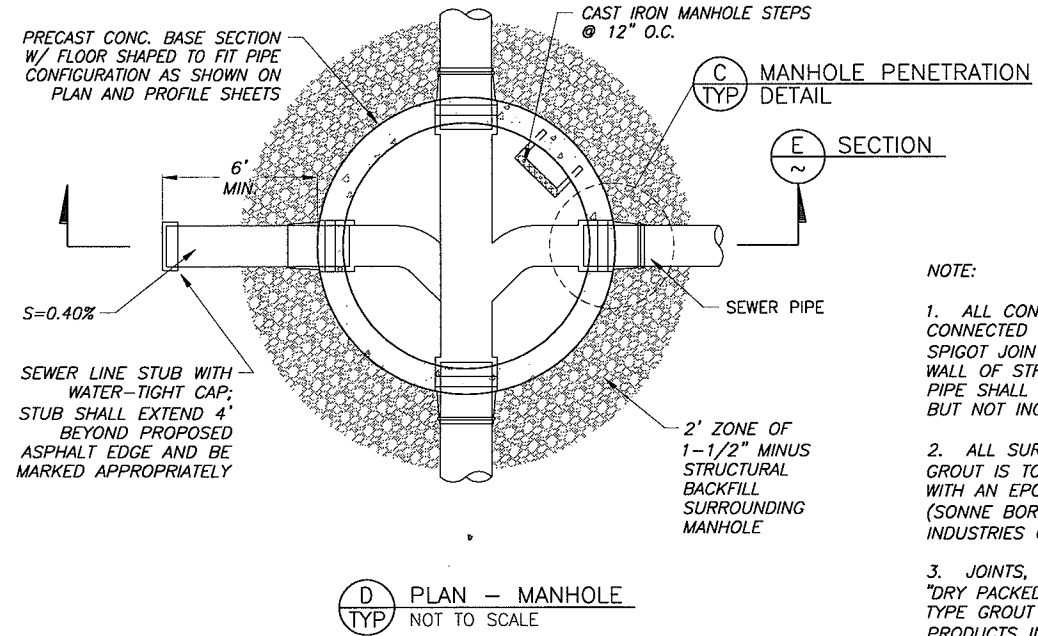
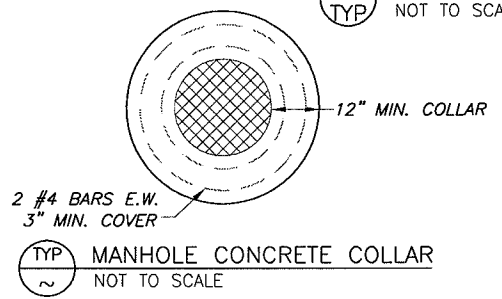
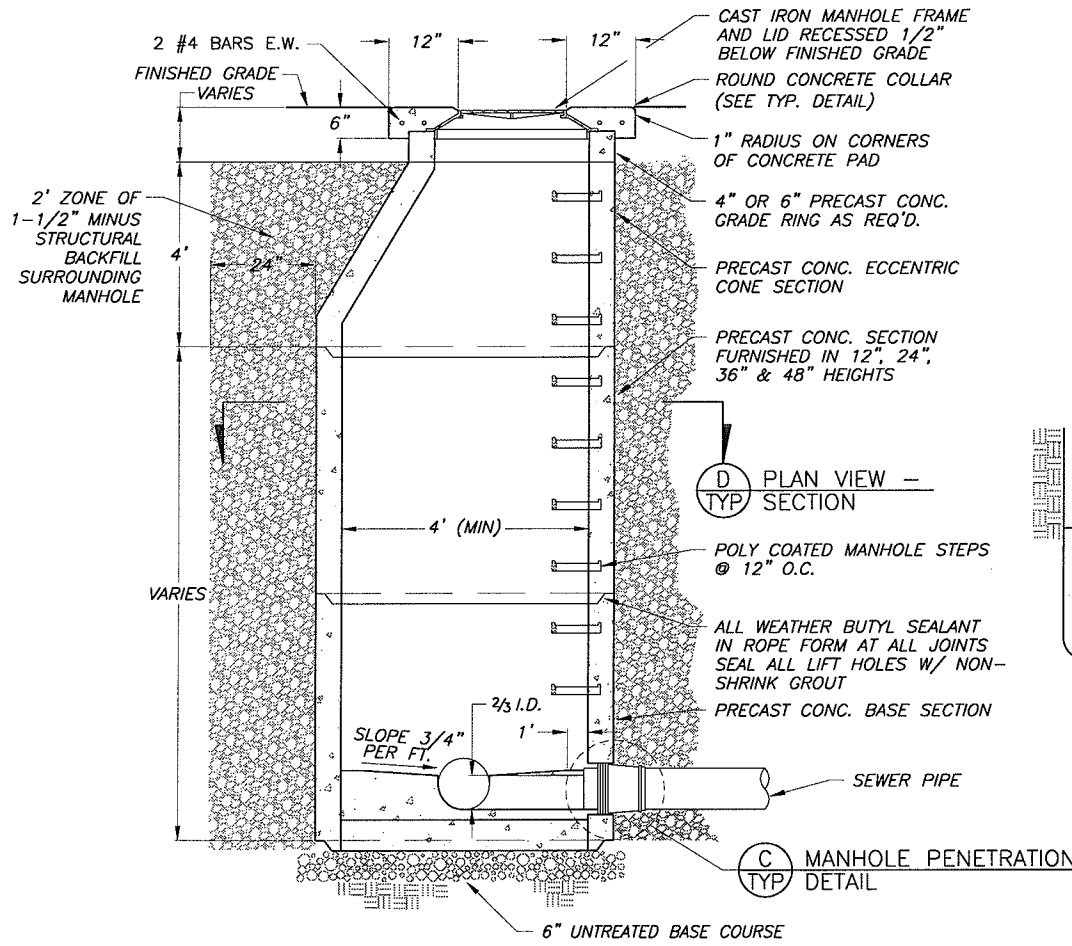
1. ALL PIPELINES SHALL BE INSTALLED AT THE LOCATIONS AND DEPTHS INDICATED ON THE APPROVED DEVELOPMENT PLANS OR AS OTHERWISE DIRECTED BY THE CITY.
2. CONTRACTOR SHALL PERFORM ALL WORK IN ACCORDANCE WITH IDAHO DEPARTMENT OF ENVIRONMENTAL QUALITY (IDEQ), WATER QUALITY RULES AND REGULATIONS.
3. ALL DISTRIBUTION PIPE SHALL BE DUCTILE IRON CL-50 FOR 12" AND LARGER AND CL-51 FOR 10" AND SMALLER. WATER SERVICE LINES SHALL BE P.E. CL-150.
4. ALL DISTRIBUTION FITTINGS SHALL BE CAST IRON OR DUCTILE IRON, AWWA C-110 CLASS 250.
5. PIPE SHALL BE PLACED WITHIN THE RIGHT-OF-WAY DESIGNATED, AND IN NO CASE SHALL THE PIPELINE BE CLOSER THAN 3 FEET FROM THE PROPERTY LINE.
6. MINIMUM HORIZONTAL SEPARATION FROM SEWER SHALL BE 10'. IF HORIZONTAL SEPARATION CANNOT BE MAINTAINED THEN WATER LINE SHALL BE 1'-6" VERTICALLY ABOVE SEWER OR SEWER SHALL BE CASED UNTIL SEPARATION CAN BE MET.
7. ALL APPURTENANT FITTINGS TO BE WRAPPED WITH 8-MIL PLASTIC TO PREVENT CONCRETE FROM ADHERING TO ANY PART OF FITTING.
8. "MEGA-LUG" JOINT RESTRAINTS SHALL BE USED FOR THRUST SUPPORT IN CONJUNCTION WITH THRUST BLOCKING.
9. FIRE HYDRANTS AND CURB STOPS SHALL BE LOCATED OUT OF SIDEWALK AREA WHERE POSSIBLE. LOCATE 1' BEHIND WALK IN UTILITY EASEMENT AS SHOWN OR 1' IN FRONT OF WALK IF NO EASEMENT IS AVAILABLE BEHIND WALK.
10. ALL UTILITY CROSSINGS (INCLUDING WATER, SEWER, ELECTRIC, TELEPHONE, ETC.) UNDER ASPHALT ROADWAY SURFACES SHALL BE BORED BY AN APPROVED METHOD CONSISTENT WITH THE AREA AND SOIL CONDITIONS UNLESS OTHERWISE APPROVED IN WRITING BY SPECIAL PERMIT BY THE CITY OR ITS ENGINEER.
11. ALL COMPONENTS INCLUDING CORPORATION STOP, SERVICE LINE, CURB VALVE, METER SETTER (YOKE), METER BOX (PIT), AND METER BOX RING AND COVER SHALL BE INSTALLED CONCURRENTLY. METERS SHALL BE INSTALLED AFTER OBTAINING A CERTIFICATE OF OCCUPANCY FROM THE CITY.
12. NO METER PITS WILL BE LOCATED IN DRIVEWAYS.
13. VALVES SHALL BE INSTALLED ON ALL LEGS OF INTERSECTIONS.
14. HYDRANTS SHALL BE INSTALLED AT THE BEGINING AND END OF ALL PROJECTS AND HAVE A MAXIMUM SPACING OF 400'.

SUNRISE ENGINEERING
47 EAST 4TH AVE.
AFTON, WYOMING 83110
TEL 307.885.8500 • FAX 307.885.8501
www.sunrise-eng.com

CITY OF VICTOR
STANDARD DRAWINGS
HYDRANT, MAIN VALVE & WATER
SERVICE CONSTRUCTION

DATE	DESIGNED	DRAWN	CHECKED	SHEET NO.	
12/20/06	EED	EED	EJS	3 of 8	3

W:\00899 Victor General City Eng\Load\PMIS & Tech Specs\2006 PW Drawings\DWG 4 - Sewer Services 2006.dwg Dec 20, 2006 11:06am m.jardine



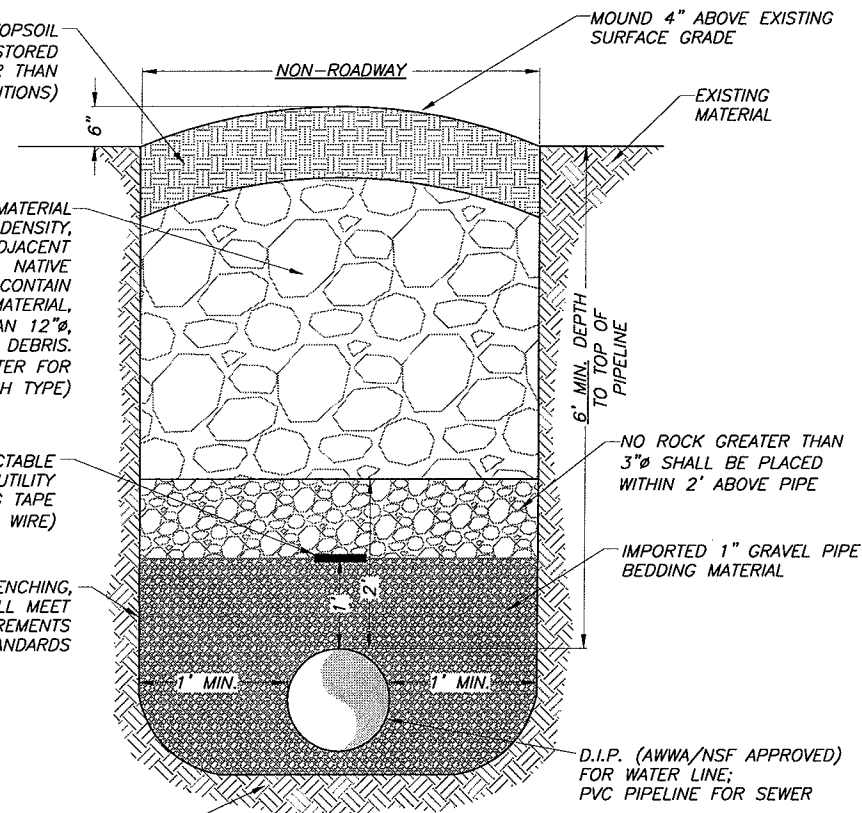
NOTE:

1. ALL CONCRETE PIPES (24" OR LESS IN DIA.) CONNECTED TO MANHOLES SHALL HAVE A BELL AND SPIGOT JOINT LOCATED WITHIN 24" OF THE OUTSIDE WALL OF STRUCTURE. THIS PROTRUDING PORTION OF PIPE SHALL BE SUPPORTED WITH CONCRETE UP TO, BUT NOT INCLUDING THE JOINT.
2. ALL SURFACES (AGAINST WHICH CONCRETE OR GROUT IS TO BE PLACED) SHALL FIRST BE COATED WITH AN EPOXY BONDING AGENT SUCH AS SONNO BOND (SONNE BORN CO.) PROBOND EPOXY ET-150 (PROTEX INDUSTRIES CO.) OR EQUAL.
3. JOINTS, ETC., THAT MUST BE GROUTED, SHALL BE "DRY PACKED" WITH A NON-SHRINKING, NON-METALLIC, TYPE GROUT SUCH AS THORITE STANDARD DRY WALL PRODUCTS INC.) OR EQUAL.

- CONSTRUCTION NOTES:**
1. WHEN A PRE-MANUFACTURED TAP OR TEE IS USED, THE CONNECTION SHALL BE LOCATED WITHIN THE LIMITS OF SERVICE CONNECTION SHOWN ON THESE DRAWINGS.
 2. CLEANOUTS SHALL BE LOCATED EVERY 100' IN SERVICE LINES AND AT ANY BEND OVER 45'. CLEANOUTS SHALL NOT BE LOCATED IN PUBLIC RIGHT-OF-WAY WITHOUT WRITTEN PERMISSION OF THE CITY.
 3. ALL SEWER TAPS SHALL BE CAST IN PLACE BY THE MANUFACTURER OF THE MAIN LINE OR SHALL BE FIELD INSTALLED AS SPECIFIED IN THE STANDARD SPECIFICATIONS AND THESE DRAWINGS.
 4. SERVICE LINES TO SEWERED BASEMENTS SHALL HAVE A BACKFLOW PREVENTION DEVICE ON THE SERVICE LINE.
 5. SEWER MAINS SHALL NOT BE SHALLOWER THAN 9 FEET UNLESS AUTHORIZED IN WRITING BY THE CITY.
 6. ALL MANHOLE FLOW LINES SHALL BE CONSTRUCTED TO PROVIDE SMOOTH FLOW-THROUGH CHARACTERISTIC.
 7. JOINTS, ETC., THAT MUST BE GROUTED, SHALL BE "DRY PACKED" WITH A NON-SHRINKING, NON-METALLIC, EPOXY-TYPE GROUT.
 8. MATCH TOP OF PIPES WHEN THE INLET IS SMALLER IN DIAMETER THAN THE OUTLET OR AS DIRECTED BY THE CITY ENGINEER.
 9. MAXIMUM SPACING BETWEEN MANHOLES SHALL BE 400 FEET OR AS DIRECTED BY THE CITY ENGINEER.
 10. FLOW LINE OF OUTLET PIPE SHALL BE 0.10 FT. BELOW FLOW LINE OF SAME SIZE INLET PIPE.
 11. ALL UTILITY CROSSINGS (INCLUDING WATER, SEWER, ELECTRIC, TELEPHONE, ETC.) UNDER ASPHALT ROADWAY SURFACES SHALL BE BORED BY AN APPROVED METHOD CONSISTENT WITH THE AREA AND SOIL CONDITIONS UNLESS OTHERWISE APPROVED IN WRITING BY SPECIAL PERMIT BY THE CITY OR ITS ENGINEER.
 12. ANY SEWER MANHOLE LOCATED IN A PARKING LOT OR LOW-LYING AREA SHALL HAVE A WATER-TIGHT LID.
 13. ALL MAINLINE CONNECTIONS TO MANHOLES SHALL BE CORE DRILLED.
 14. ALL MANHOLES SHALL HAVE A MINIMUM INSIDE DIAMETER OF 4 FEET. MANHOLES WITH SEWER MAINS GREATER THAN 15 INCHES IN DIAMETER SHALL BE HAVE A MINIMUM INSIDE DIAMETER OF 5 FEET.
 15. SEWER LINE STUBOUT ENDS SHALL EXTEND TO THE ROW OR PROPERTY LINE AS APPLICABLE.
 16. SEWER LINE LATERALS SHALL HAVE A MINIMUM PARALLEL OFFSET OF 10' FROM THE PROPERTY LINE.

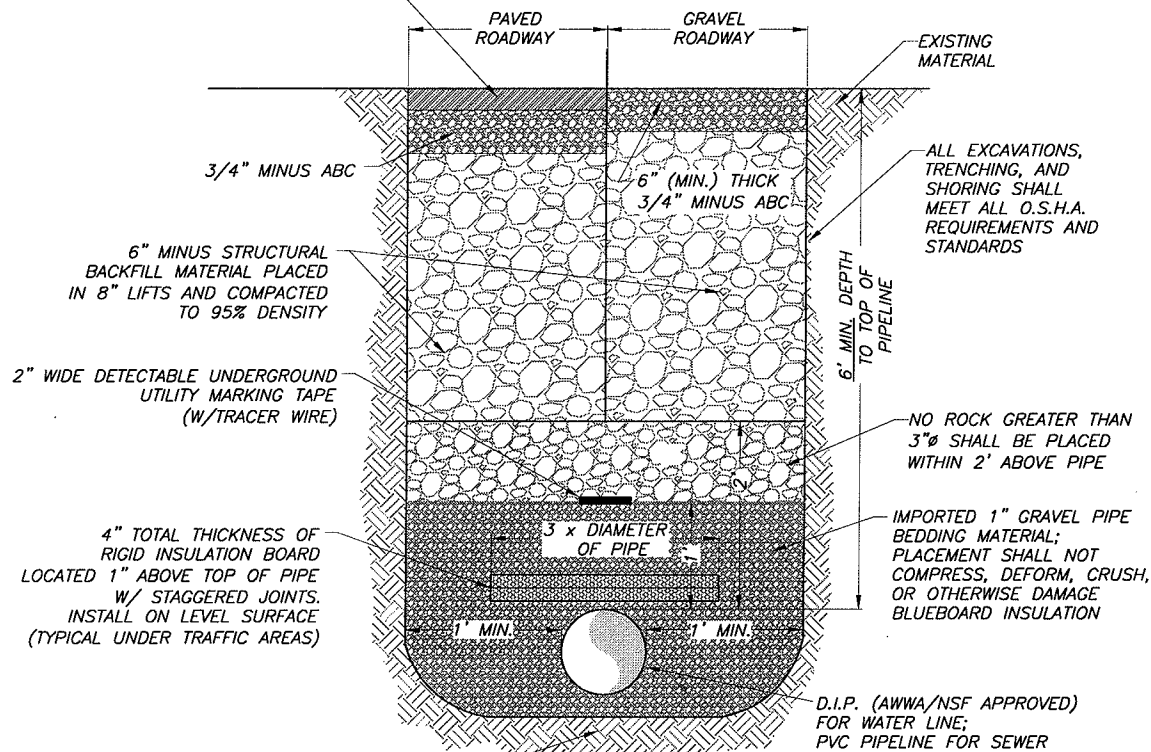
47 EAST 4TH AVE. AFTON, WYOMING 83110 TEL 307.885.8500 • FAX 307.885.8501 www.sunrise-eng.com		CITY OF VICTOR STANDARD DRAWINGS SEWER MANHOLE & LATERAL TIE-IN CONSTRUCTION		
DATE	DESIGNED	DRAWN	CHECKED	SHEET NO.
12/20/06	EED	EED	EJS	4 of 8
				4

8" THICK (MIN) TOPSOIL (DISTURBED AREA TO BE RESTORED TO EQUAL OR BETTER THAN PRE-CONSTRUCTION CONDITIONS)



TYP TYPICAL NON-ROADWAY TRENCH NOT TO SCALE

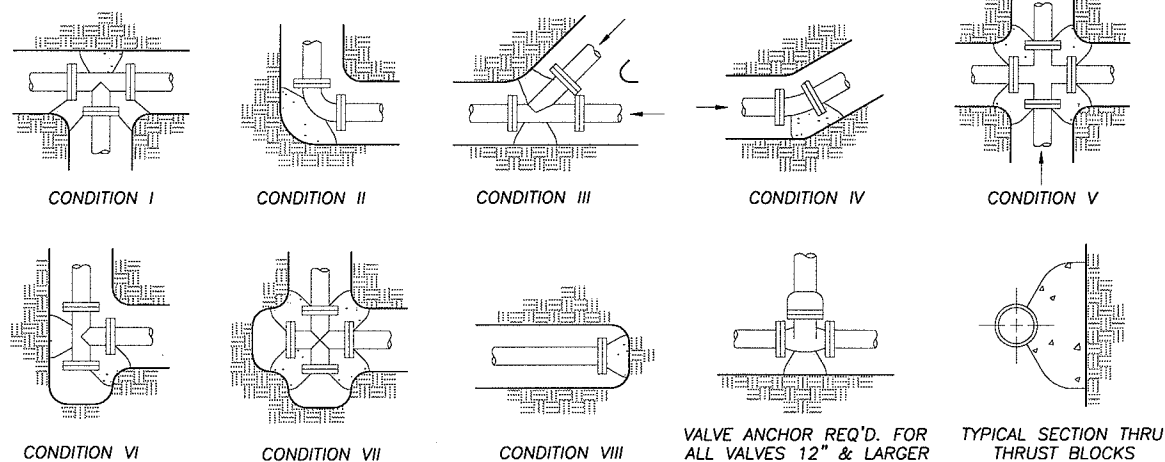
PROPOSED BITUMINOUS PAVEMENT



TYP TYPICAL ROADWAY TRENCH NOT TO SCALE

GENERAL NOTES:

1. ALL CONSTRUCTION WORK SHALL BE PERFORMED WITHIN CITY EASEMENTS, STREET RIGHTS-OF-WAY OR RIGHTS-OF-WAY OBTAINED FOR CONSTRUCTION PURPOSES.
2. THE CONTRACTOR HAS THE ULTIMATE RESPONSIBILITY OF LOCATING ALL UNDERGROUND UTILITIES AND PROTECTING THEM FROM DAMAGE.
3. ALL EXCAVATIONS, TRENCHING, AND SHORING SHALL MEET THE REQUIREMENTS OF THE IDAHO OCCUPATIONAL HEALTH AND SAFETY COMMISSION.
4. ALL CONSTRUCTION SHALL CONFORM TO VICTOR CITY PUBLIC WORKS STANDARDS AND ALL APPLICABLE REQUIREMENTS OF THE STATE OF IDAHO, DEPARTMENT OF ENVIRONMENTAL QUALITY. CONSTRUCTION WILL BE SUBJECT TO INSPECTION BY, BUT NOT LIMITED TO, BOTH AGENCIES.
5. CONTRACTOR SHALL PROPERLY PREPARE, PLACE, AND COMPACT ALL FILL MATERIAL IN ACCORDANCE WITH THE RECOMMENDATIONS OF THE ENGINEER AND THE TECHNICAL SPECIFICATIONS. COMPACTION OF ALL FILL MATERIAL SHALL BE TESTED BY A CERTIFIED TESTING LAB.
6. CONTRACTOR SHALL KEEP ALL PUBLIC ROADWAYS CLEAR OF MUD, DIRT, AND DEBRIS CREATED BY CONSTRUCTION ACTIVITIES. DUST SHALL BE CONTROLLED BY WATERING.
7. ALL UTILITY CROSSINGS (INCLUDING WATER, SEWER, ELECTRIC, TELEPHONE, ETC.) UNDER ASPHALT ROADWAY SURFACES SHALL BE BORED BY AN APPROVED METHOD CONSISTENT WITH THE AREA AND SOIL CONDITIONS UNLESS OTHERWISE APPROVED IN WRITING BY SPECIAL PERMIT BY THE CITY OR ITS ENGINEER.
8. TRACER WIRE SHALL BE INSTALLED OVER ALL CONSTRUCTED PIPING CONCURRENT WITH UNDERGROUND UTILITY MARKING TAPE. TRACER WIRE ACCESS BOXES SHALL BE INSTALLED PER MANUFACTURER'S RECOMMENDATIONS AT REGULAR INTERVALS OF NO GREATER THAN 400 LINEAL FEET.

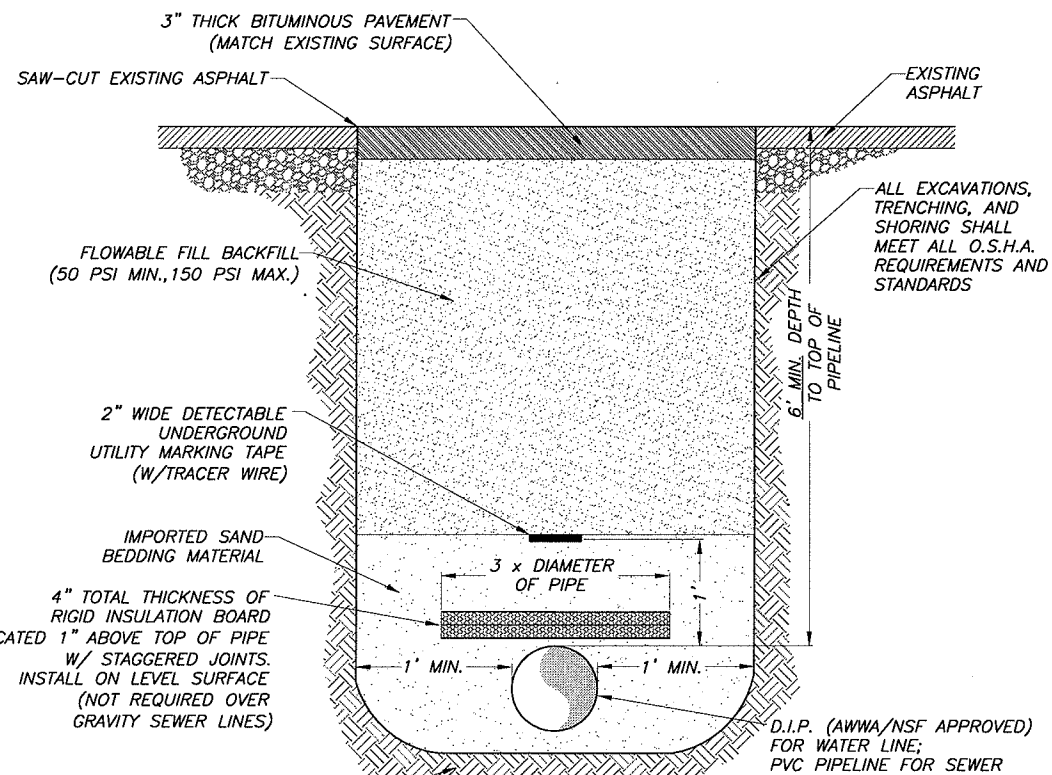


PIPE SIZE	CONDITION							
	I	II	III	IV	V	VI	VII	VIII
4	1.7	2.2	1.7	1.0	0.9	1.3	2.2	1.7
6	3.1	4.3	2.4	1.3	1.7	2.2	2.2	3.1
8	5.2	7.3	3.9	2.2	2.6	3.9	7.3	5.2
10	8.3	11.7	6.5	3.5	4.3	6.1	11.7	8.3
12	11.7	16.3	9.1	5.2	6.1	8.2	16.5	11.7
14	16.0	22.5	12.1	6.5	8.2	11.3	22.5	16.0
16	20.7	29.3	15.9	8.5	10.3	15.5	29.3	20.7
18	24.9	35.7	20.4	10.6	12.0	21.2	35.7	24.9

TYP THRUST BLOCKING NOT TO SCALE

NOTES:

1. ALL THRUST BLOCK BEARING FACES SHALL BE POURED AGAINST UNDISTURBED NATIVE SOIL OR APPROVED COMPACTED BACKFILL.
2. CONCRETE SHALL HAVE A 28 DAY AVERAGE COMPRESSIVE STRENGTH OF 2500 PSI.
3. CALCULATED ON 150 LB. TEST PRESSURE & ALLOWABLE BEARING PRESSURE OF 2000 LBS. PER SQ. FT. IN POORER SOILS SPECIAL DESIGN IS REQUIRED.
4. ALL THRUST BLOCK SIDES SHALL BE FORMED.
5. ALL FITTINGS REQUIRING THRUST BLOCKS SHALL BE COVERED WITH 8 MIL POLYETHYLENE COVER.



TYP TYPICAL ROADWAY OPEN-CUT TRENCH NOT TO SCALE

PROFESSIONAL ENGINEER
 REGISTERED
 1242
 STATE OF IDAHO
 ERIC DURSTELER

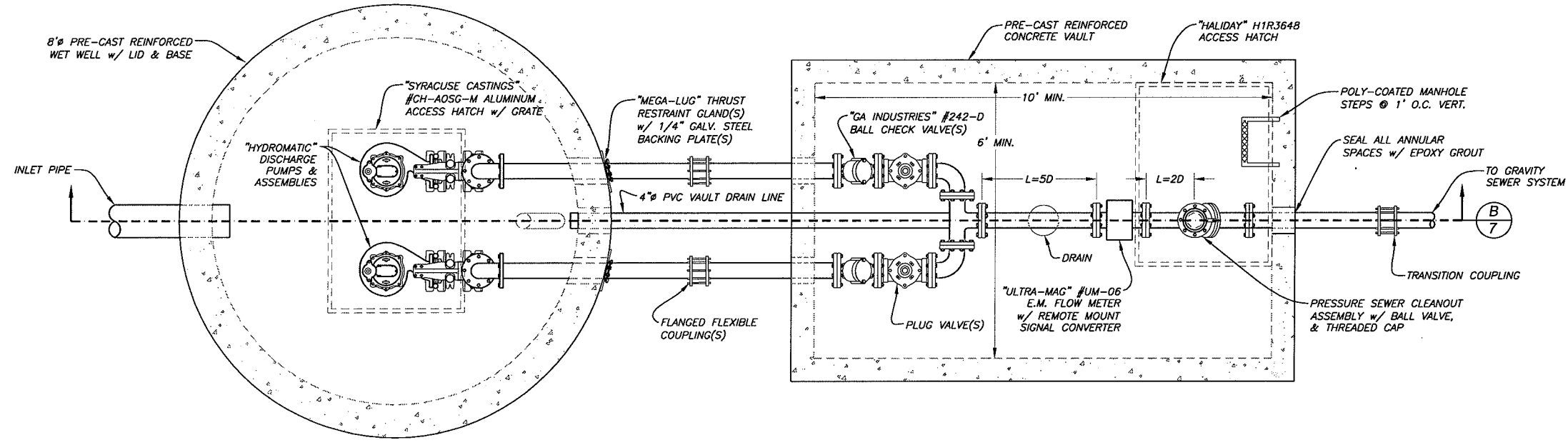
SUNRISE ENGINEERING
 47 EAST 4TH AVE.
 AFTON, WYOMING 83110
 TEL 307.885.8500 • FAX 307.885.8501
 www.sunrise-eng.com

CITY OF VICTOR
 STANDARD DRAWINGS
 TYPICAL TRENCHING &
 THRUST BLOCKING

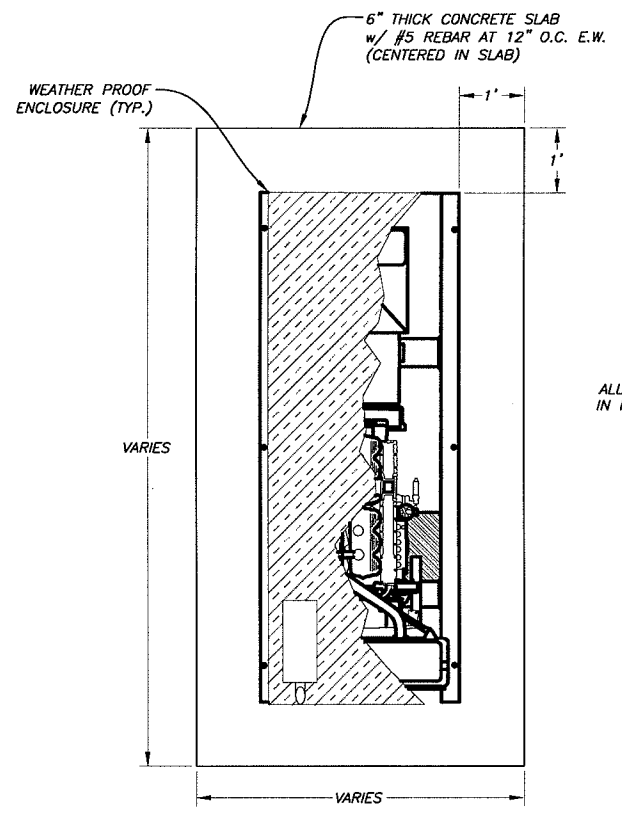
DATE	DESIGNED	DRAWN	CHECKED	SHEET NO.
12/20/06	EED	EED	EJS	5 of 8

5

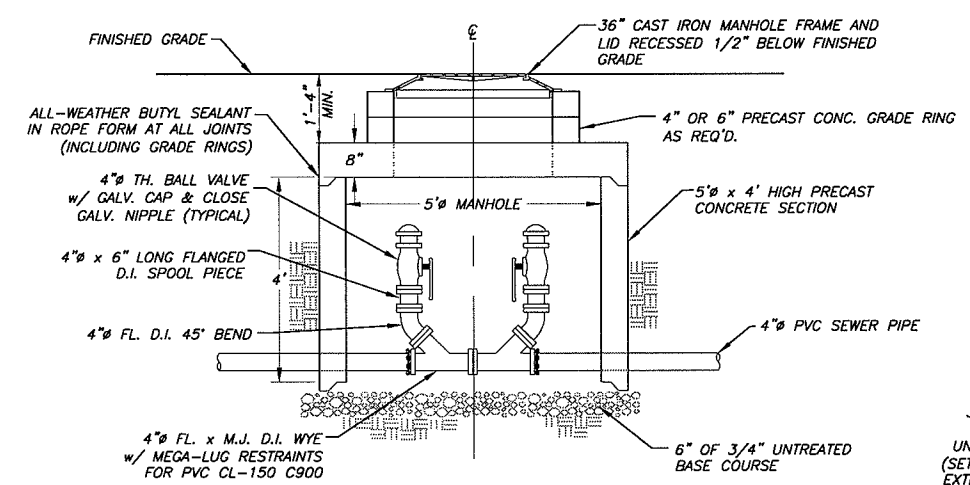
W:\00899 Victor General City Eng\Gad\PMW & Tech Specs\2006 PW Drawings\DWG 6 & 7 - Sewer Lift Station, 2006.dwg, Dec. 20, 2006 10:52am mjp/rdine



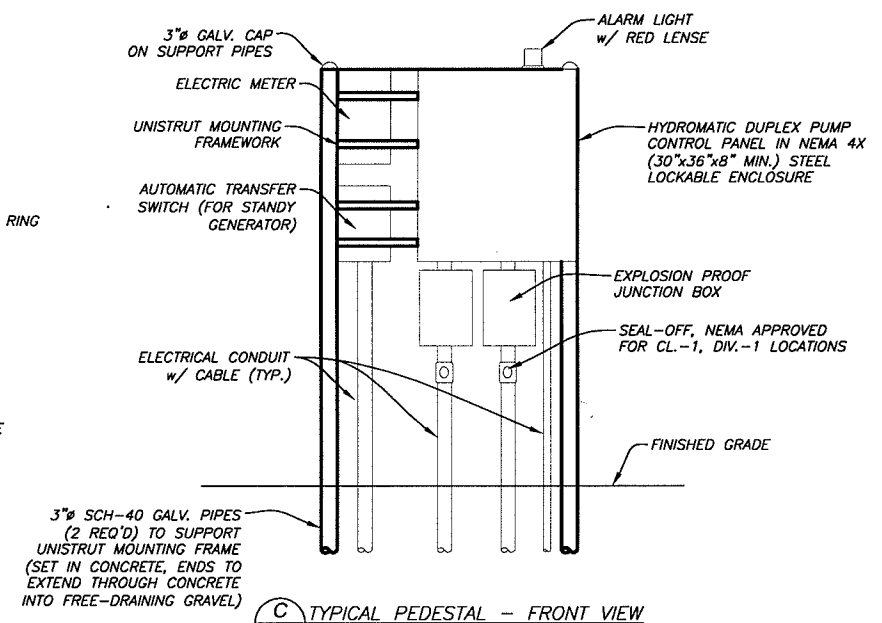
A LIFT STATION - PLAN
SCALE 1"=3'



G STANDBY GENERATOR
N.T.S.



F TYP. PRESSURE SEWER LINE CLEAN-OUT
N.T.S.

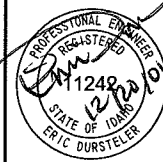



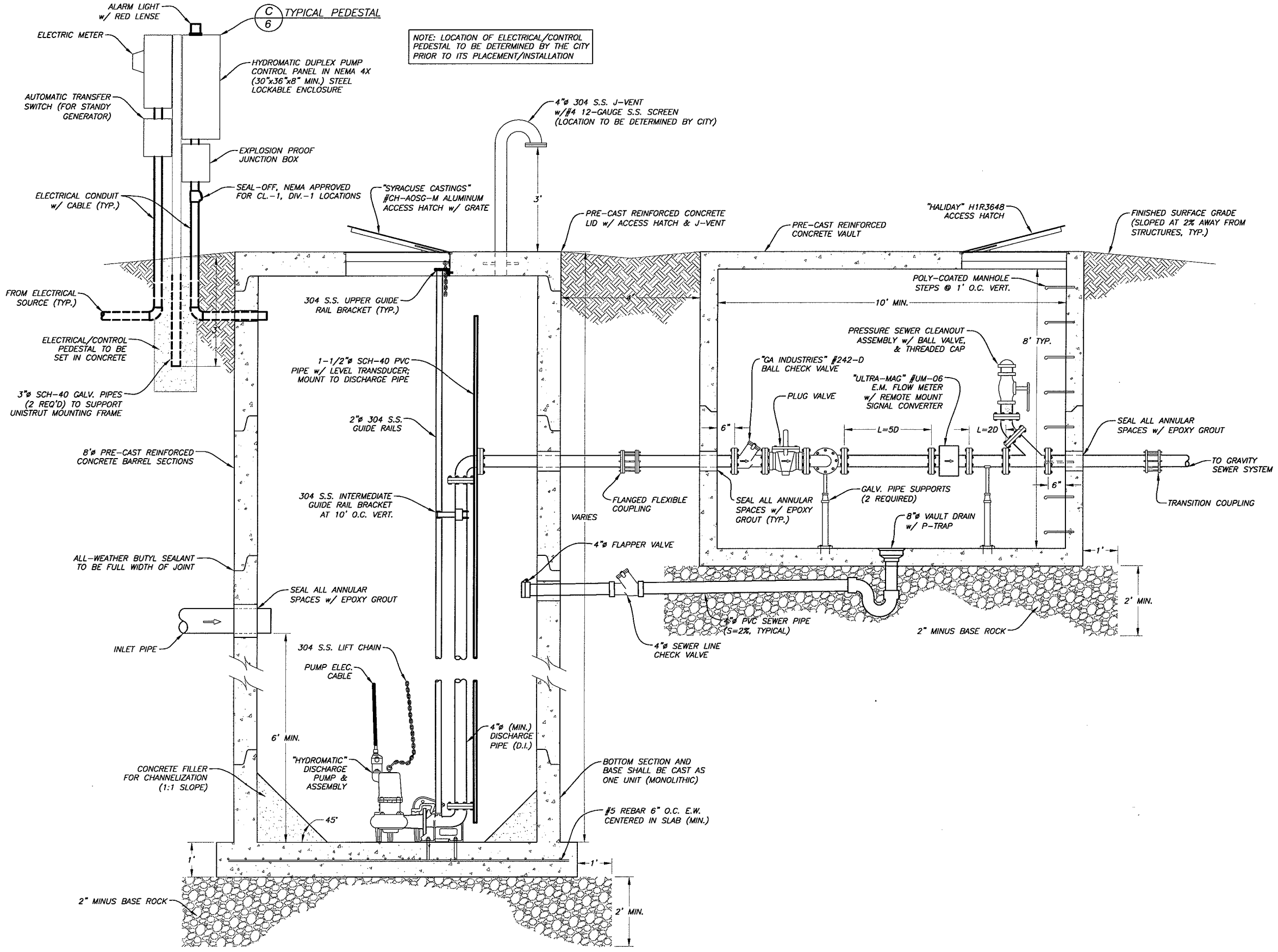
C TYPICAL PEDESTAL - FRONT VIEW
N.T.S.

NOTE: LOCATION OF ELECTRICAL/CONTROL PEDESTAL TO BE APPROVED BY THE CITY PRIOR TO ITS PLACEMENT/INSTALLATION

CONSTRUCTION NOTES:

1. CONCRETE SHALL HAVE A DESIGN STRENGTH OF 4000 PSI AT 28 DAYS. UNITS SHALL BE POURED MONOLITHICALLY TO DESIRED HEIGHT.
2. ALL HARDWARE WITHIN WET WELL SHALL BE 304 STAINLESS STEEL.
3. FIELD EXCAVATION AND PREPARATION SHALL BE COMPLETED PRIOR TO DELIVERY OF ASSEMBLIES.
4. ALL PIPING FROM SEWAGE PUMPS TO TRANSITION COUPLING (DOWNSTREAM FROM CONTROL VAULT) SHALL BE CL-51 DUCTILE IRON PIPE.
5. ALL PIPING, FITTINGS, VALVING, ETC. SHALL NOT BE LESS THAN 4". IN NO CASE SHALL THE PIPELINE VELOCITY BE LESS THAN 2 FT/SEC OR GREATER THAN 5 FT/SEC.
6. 110 VOLT CONVENIENCE RECEPTACLE w/ GFI PROTECTION SHALL BE INSTALLED IN NEMA-4X ENCLOSURE ON ELECTRICAL PEDESTAL.
7. STANDARD 2" "FORD" FLUSH HYDRANT SHALL BE INSTALLED WITHIN 20 FEET OF WET WELL FOR CLEANING PURPOSES. LOCATION SHALL BE DETERMINED BY THE CITY.

				
CITY OF VICTOR STANDARD DRAWINGS SEWER LIFT STATION ~ PLAN ~				
DATE	DESIGNED	DRAWN	CHECKED	SHEET NO.
12/20/06	EED	EED	EJS	6 of 8
				6



NOTE: LOCATION OF ELECTRICAL/CONTROL PEDESTAL TO BE DETERMINED BY THE CITY PRIOR TO ITS PLACEMENT/INSTALLATION

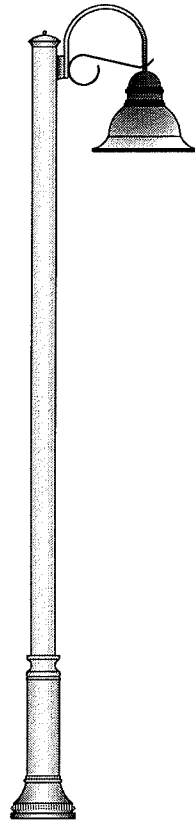
- CONSTRUCTION NOTES:**
1. CONCRETE SHALL HAVE A DESIGN STRENGTH OF 4000 PSI AT 28 DAYS. UNITS SHALL BE POURED MONOLITHICALLY TO DESIRED HEIGHT.
 2. ALL HARDWARE WITHIN WET WELL SHALL BE 304 STAINLESS STEEL.
 3. ALL PIPING FROM SEWAGE PUMPS TO TRANSITION COUPLING (DOWNSTREAM FROM CONTROL VAULT) SHALL BE CL-51 DUCTILE IRON PIPE.
 4. ALL PIPING, FITTINGS, VALVING, ETC. SHALL NOT BE LESS THAN 4". IN NO CASE SHALL THE PIPELINE VELOCITY BE LESS THAN 2 FT/SEC OR GREATER THAN 5 FT/SEC.
 5. 110 VOLT CONVENIENCE RECEPTACLE w/ GFI PROTECTION SHALL BE INSTALLED IN NEMA-4X ENCLOSURE ON ELECTRICAL PEDESTAL.
 6. STANDARD 2" "FORD" FLUSH HYDRANT SHALL BE INSTALLED WITHIN 20 FEET OF WET WELL FOR CLEANING PURPOSES. LOCATION SHALL BE DETERMINED BY THE CITY.

B
6 LIFT STATION - SECTION
SCALE 1"=3'

<p>PROFESSIONAL ENGINEER REGISTERED No. 1242 STATE OF IDAHO ERIC DURSTELER</p>		<p>SUNRISE ENGINEERING 47 EAST 4TH AVE. AFTON, WYOMING 83110 TEL. 307.885.8500 · FAX 307.885.8501 www.sunrise-eng.com</p>			
<p>CITY OF VICTOR STANDARD DRAWINGS SEWER LIFT STATION ~ SECTION ~</p>					
DATE	DESIGNED	DRAWN	CHECKED	SHEET NO.	7
12/20/06	EED	EED	EJS	7 of 8	

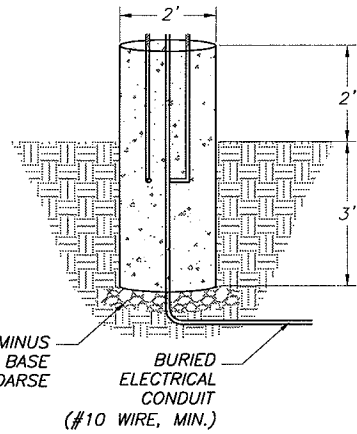
W:\00899 Victor General City Eng\Std\Drawings\DWG 6 & 7 - Sewer Lift Station 2006.dwg Dec 20, 2006 10:51am m.pridine

W:\00899 Victor General City Eng\Cad\PWS & Tech Specs\2006 PW Drawings\DWG 8 - Street Lighting\DWG 8 2006.dwg Dec 20, 2006 10:51am m.jr.dine

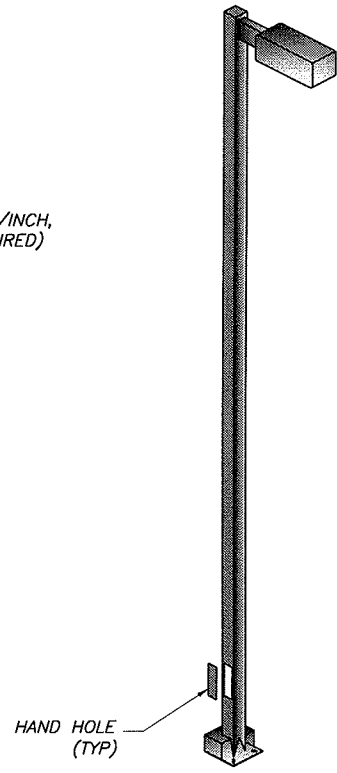


NEIGHBORHOOD STREET LIGHT NOTES:

1. 5" Ø STEEL SHAFT, 16' HIGH ("DELTA" RS516).
2. CAST ALUMINUM BASE COVER ("DELTA" B1B).
3. GT SERIES FIXTURE (20" TALL X 26" WIDE).
4. 150 WATT HIGH PRESSURE SODIUM LAMP
5. DARK GREEN COLOR ("DG").
6. 3/4" Ø GALVANIZED ANCHOR BOLTS WITH 10 THREADS/INCH, 30" LENGTH WITH 4" L-HOOK. (4 PER UNIT REQUIRED)

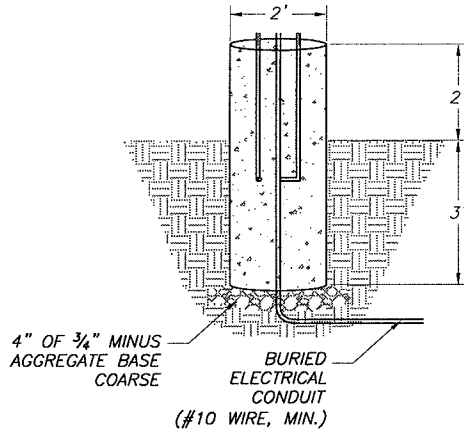


(TYP) NEIGHBORHOOD LIGHTING
~ NOT TO SCALE



PARKWAY/ROADWAY STREET LIGHT NOTES:

1. 4" SQUARE STEEL SHAFT, 15' HIGH ("RUUD" PS4V15G(a)BZ).
2. 240 VOLTS
3. HIGH PRESSURE SODIUM HEAD ("RUUD" 250W HPS).
4. 3/4" Ø GALVANIZED ANCHOR BOLTS WITH 10 THREADS/INCH, 30" LENGTH WITH 4" L-HOOK. (4 PER UNIT REQUIRED)



(TYP) PARKWAY/ROADWAY LIGHTING
~ NOT TO SCALE

GENERAL STREET LIGHT NOTES:

1. ALL STREET LIGHTING RESULTING FROM A SINGLE DEVELOPMENT SHALL OPERATE THROUGH A SINGLE METER.
2. ROADWAY STREET LIGHTS SHALL BE EQUIPED WITH A 15 AMP 110 KVA GFI RECEPTACLE LOCATED IN A WEATHERPROOF ENCLOSURE.

	<p>SUNRISE ENGINEERING 47 EAST 4TH AVE. AFTON, WYOMING 83110 TEL 307.885.8500 • FAX 307.885.8501 www.sunrise-eng.com</p>	

CITY OF VICTOR					
STANDARD DRAWINGS					
STREET LIGHTING					
DATE	DESIGNED	DRAWN	CHECKED	SHEET NO.	
12/20/06	EED	EED	EJS	8 of 8	8